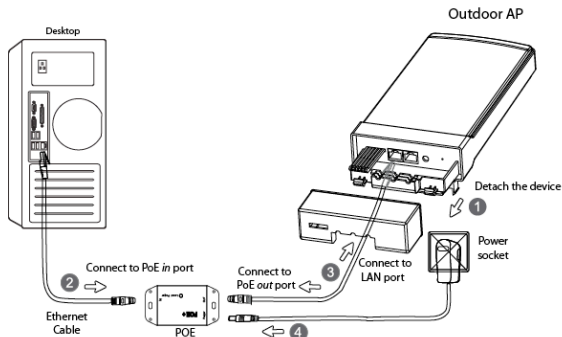


Read Me First

Outdoor Wireless Access Point
MMJ/MML Series


1. Hardware Connection

- To set up the device for the first time, please connect the device to a computer by following the steps in the illustration below



*Note: In the illustration we use MMJ5N26E as an example

- After finishing the connection, please check the status of LEDs.

Indicator	Name	Normal Status
	LED40	continuously on (green)
	LED30	continuously on (light green)
	LED20	continuously on (yellow)
	LED10	continuously on (red)
	DIAG	continuously on/Flashing
	Power	continuously on

2. Standard Configuration

Models	MML2N26	MML5N26	MML5N20
Ethernet Ports	1 X FE	1 X FE	1 X FE
Directional dual polarized antenna	8dBi@2.4GHz	13dBi@5GHz	13dBi@5GHz
PoE support	Passive PoE (24V)	Passive PoE (24V)	Passive PoE (24V)

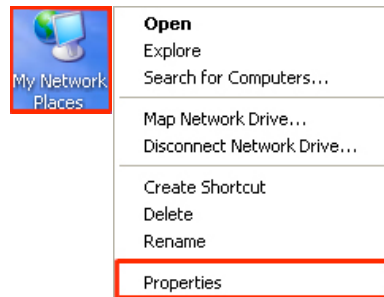
Models	MMJ2N26E	MMJ5N26E	MMJ5N20E
Ethernet Ports	2 X FE	2 X FE	2 X FE
Directional dual polarized antenna	11dBi@2.4GHz	17dBi@5GHz	17dBi@5GHz
PoE support	Passive PoE (24V)	Passive PoE (24V)	Passive PoE (24V)

Models	MMJ2N28LV	MMJ5N28LV
Ethernet Ports	1 X FE	1 X FE
Directional dual polarized antenna	11dBi@2.4GHz	17dBi@5GHz
PoE support	Passive PoE(24V)	Passive PoE(24V)

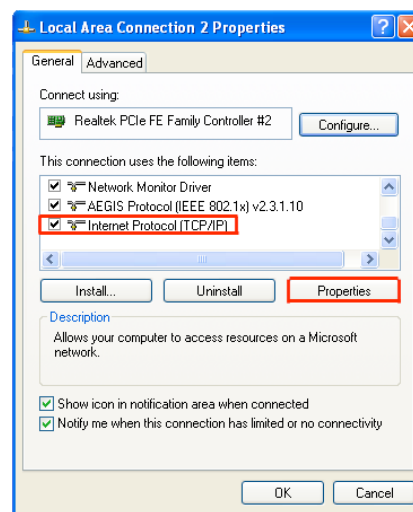
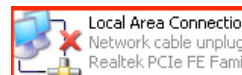
3. Computer Configuration

- For windows 2000/xp, please follow the steps blow to get your computer prepared.

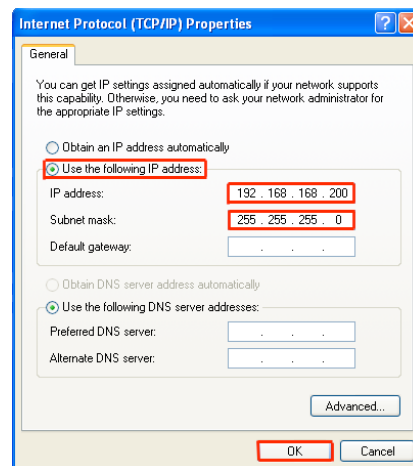
Step1. Right click "my network places" → Left click "Properties"



Step2. Double click "Local Area Connection" → Roll the vertical scroll bar to the end then left click "Internet Protocol(TCP/IP)" → Left click "Properties"



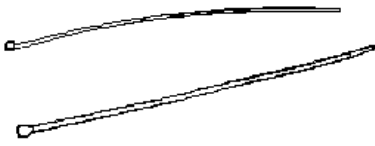
Step3. Select "Use the following IP address" → change "IP address" to "192.168.168.200" → change "Subnet Mask" to "255.255.255.0" → Left click "OK"



*Note: The IP address of the computer can be any IP varied from 192.168.168.2 to 192.168.168.254

4. Mounting Illustration

Step 1.Unpack the 2 cable ties from the packaging box as the following figure.

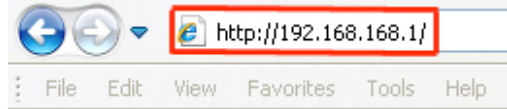


Step 2.Loop each cable tie through the mounting bracket hole at the top and bottom. Wrap them round the pole and tighten the cable ties to secure the unit to the pole.



5. Access Point Configuration

- Open the web browser. At the Address bar, input the IP address of the access point, <http://192.168.168.1> then press "Enter" on the keyboard.



- Input the default user name and password below,
Username: admin
Password: password

A screenshot of a web browser's login form. The form has a light beige background and a blue border. It contains the following elements: a "User name:" label followed by a dropdown menu showing "admin"; a "Password:" label followed by a text input field containing ten black dots; a checked checkbox labeled "Remember my password"; and two buttons at the bottom, "OK" and "Cancel", both highlighted with red rectangular boxes.

Click "OK" to open the main page.

***Note:** Remember to change your password for security purposes.

- After accessing to the main page successfully, you can start your configuration.